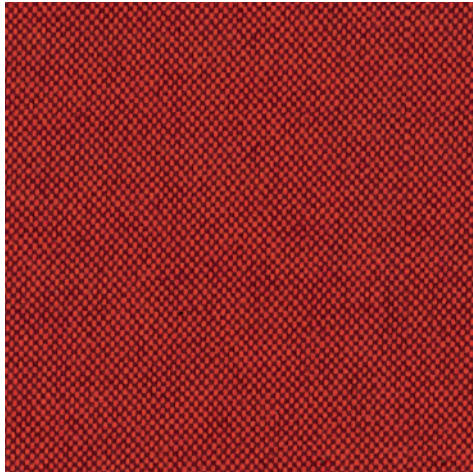


Colors

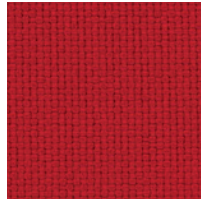
Fabric, Eco-leather, Mesh

sem

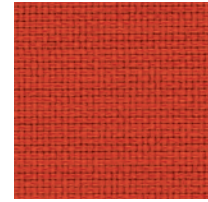
a Milani brand



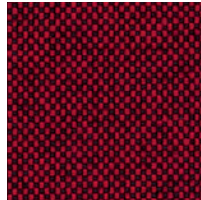
TN 9404 Tomato red



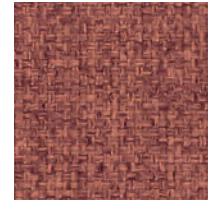
MR 6231 Super red



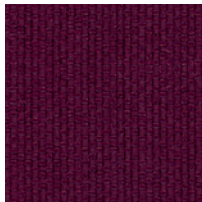
MR 6120 Red orange



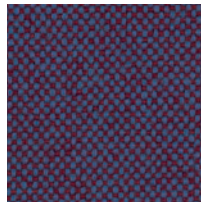
TN 9416 Dark red



CN 4211 Coral red



MR 6234 Burgundy



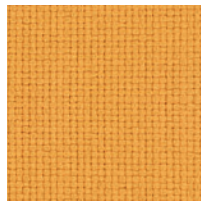
TN 9406 Plum



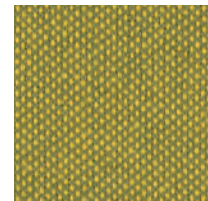
CN 4562 Dark brown



CN 4056 Mustard



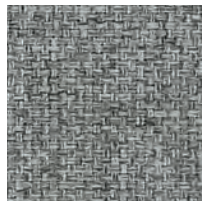
MR 6053 Honey



TN 9702 Lime



CN 4560 Clay



CN 4614 Stone



TN 9111 Warm grey



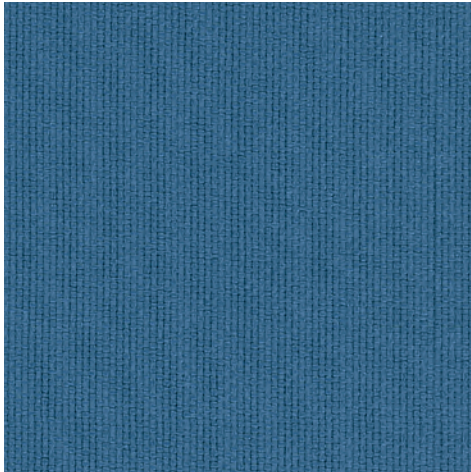
TN 9811 Chalk



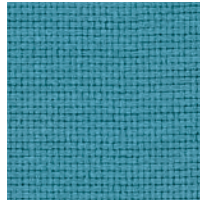
CN 4511 Sand

Fabric SM1

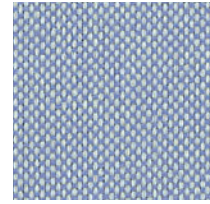
Cold hues



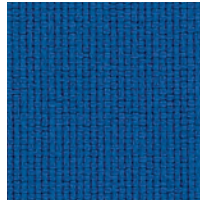
MR 6378 Misty blue



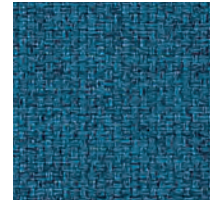
MR 6366 Turquoise



TN 9601 Mineral water



MR 6332 Indigo



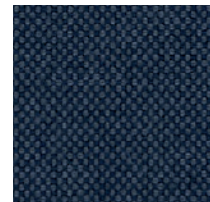
CN 4313 Ocean



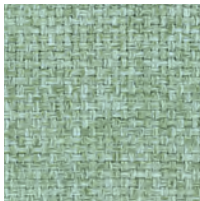
TN 9612 Amazon



MR 6333 Navy blue



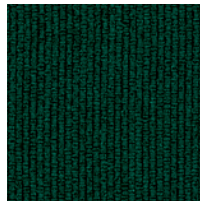
TN 9618 Lava blue



CN 4466 Mint



TN 9717 Grass green



MR 6496 Forest green



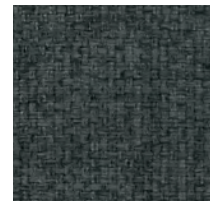
CN 4462 Moss green



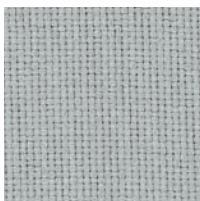
TN 9801 Concrete



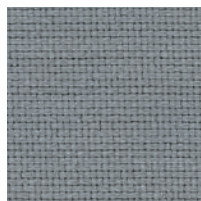
TN 9808 Black pepper



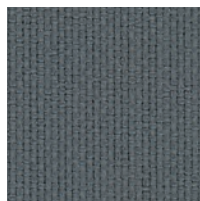
CN 4616 Charcoal



MR 6643 Light grey



MR 6629 Grey

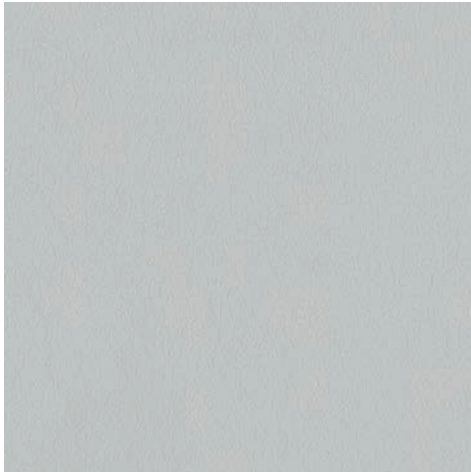


MR 6625 Dark grey



MR 6651 Jet black

Simil-leather SM1



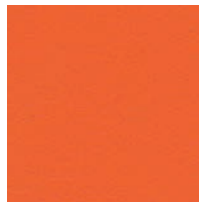
SR 0109 Cold grey



SR 0132 Royal blue



SR 0122 Dark green



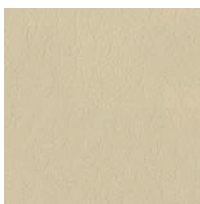
SR 0120 Orange



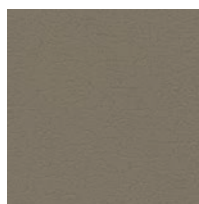
SR 0105 Yellow



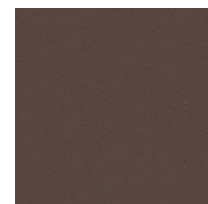
SR 0128 Red



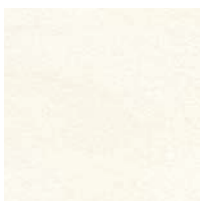
SR 0102 Cream



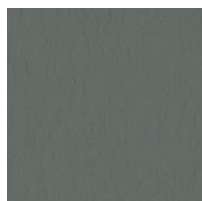
SR 0111 Beige



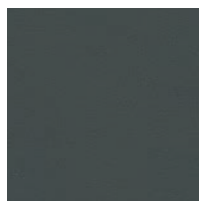
SR 0119 Brown



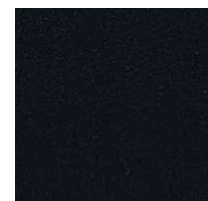
SR 0101 White



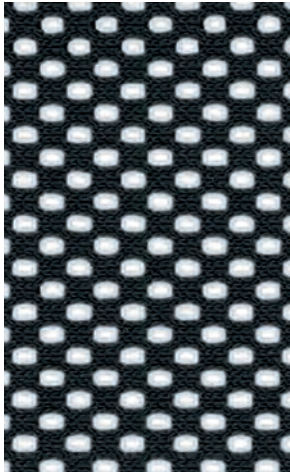
SR 0117 Quartz grey



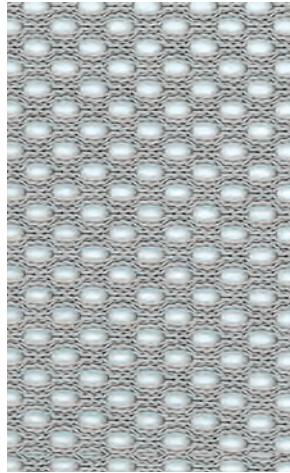
SR 0125 Anthracite



SR 0133 Black



RV 0651i Black



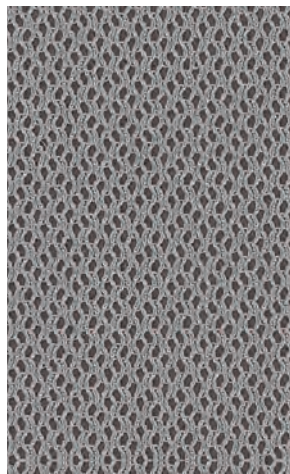
RV 0601 Grey



RV 0999 White



TT 0001i Black



TT 0002i Grey



TD 0001 Antracite

Tessuto/Fabric/Tissu

TN SM1

Tessuto ignifugo classe 1/Fire retardant fabric/Tissu ignifuge M1
Tessuto riciclabile/Recyclable fabric/Tissu recyclable



Composizione/Composition/Composition

100% Poliestere Trevira CS/Polyester Trevira CS/
Polyester Trevira CS

Peso/Weight/Poids

260 gr/m²

Solidità alla luce/Light fastness/Résistance à la lumière

6 (UNI EN ISO 105 B02)

Resistenza allo sfregamento/Abrasion resistance/Résistance au frottement

> 70.000 Martindale

Ignifugità/Fire retardancy/Réaction au feu

Classe 1 (classe 1IM in combinazione con seduta con gomma ignifuga), EN 1021-1 (cigarette), EN 1021-2 (match), M1 FR, California TB117

Manutenzione/Maintenance/Entretien

Aspirare regolarmente/Vacuum regularly/Aspirer régulièrement



MR SM1

Tessuto ignifugo classe 1/Fire retardant fabric/Tissu ignifuge M1
Tessuto riciclabile/Recyclable fabric/Tissu recyclable



Composizione/Composition/Composition

100% Poliestere Trevira CS/Polyester Trevira CS/
Polyester Trevira CS

Peso/Weight /Poids

328 gr/m²

Solidità alla luce/Light fastness/Résistance à la lumière

6 ± 1 (UNI EN ISO 105 B02)

Resistenza allo sfregamento/Abrasion resistance/Résistance au frottement

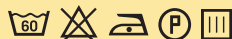
> 100.000 Martindale

Ignifugità/Fire retardancy/Réaction au feu

Classe 1 (classe 1IM in combinazione con seduta con gomma ignifuga), EN 1021-1 (cigarette), EN 1021-2 (match), M1 FR, California TB117

Manutenzione/Maintenance/Entretien

Aspirare regolarmente/Vacuum regularly/Aspirer régulièrement



CN SM1

Tessuto ignifugo classe 1/Fire retardant fabric/Tissu ignifuge M1
Tessuto riciclato e riciclabile/Recycled and recyclable fabric/Tissu recycle et recyclable



Composizione/Composition/Composition

100% Poliestere FR/Polyester FR/Polyester FR

Peso/Weight/Poids

335 gr/m²

Solidità alla luce/Light fastness/Résistance à la lumière

6 ± 1 (UNI EN ISO 105 B02)

Resistenza allo sfregamento/Abrasion resistance/Résistance au frottement

> 50.000 Martindale

Ignifugità/Fire retardancy/Réaction au feu

Classe 1 (classe 1IM in combinazione con seduta con gomma ignifuga), EN 1021-1 (cigarette), EN 1021-2 (match), M1 FR, California TB117

Manutenzione/Maintenance/Entretien

Aspirare regolarmente/Vacuum regularly/Aspirer régulièrement



Simil-pelle/Faux-leather/Simili-cuir

SR SM1

Simil-pelle ignifuga classe 1/Fire retardant Faux-leather/Simili-cuir ignifuge
Azione antibatterica/Antibacterial action/Action antibactérienne



ISO 22196:2011 E.Coli – S.Aureus
ISO 846 metodo B

Composizione/Composition/Composition

87,5 % PVC + 12,5 % COT

Peso/Weight/Poids

640 gr/m²

Solidità alla luce/Light fastness/Résistance à la lumière

6/7 (UNI EN ISO 105 B02)

Resistenza allo sfregamento/Abrasion resistance/Résistance au frottement

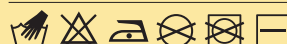
> 100.000 Martindale

Ignifugità/Fire retardancy/Réaction au feu

Classe 1 (classe 1IM in combinazione con seduta con gomma ignifuga), EN 1021-1 (cigarette), EN 1021-2 (match), M2 FR, California TB117

Manutenzione/Maintenance/Entretien

In caso di macchie lievi utilizzare un panno umido e sapone neutro. Per macchie persistenti, utilizzare una soluzione di alcool + acqua 20% e risciacquare/Use mild soap and warm water for slight spots, in case of persistent spots use a solution of alcohol + water 20% and rinse/Utiliser savon neutre et eau tiède sur les taches légères, en cas de taches persistantes utiliser une solution d'alcool + eau 20% et rincer



Rete/Mesh/Résille

RV SM1

Rete/Mesh/Résille

Tessuto riciclabile/Recyclable fabric/Tissu recyclable



Composizione/Composition/Composition

Peso/Weight/Poids

Solidità alla luce/Light fastness/Résistance à la lumière

Resistenza allo sfregamento/Abrasion resistance/Résistance au frottement

Ignifugità/Fire retardancy/Réaction au feu

100% Poliestere/Polyester/Polyester

353 gr/m²

5± 1 (UNI EN ISO 105 B02)

> 100.000 Martindale

Classe 1 per il colore nero (classe 1IM in combinazione con seduta con gomma ignifuga)/Fire retardancy for black mesh color/Traitement non feu sur la finition noire

Manutenzione/Maintenance/Entretien

Aspirare regolarmente/Vacuum regularly/Aspirer régulièrement



TT SM1

Rete a maglia/Knitted fabric/Maille

Disponibile solo per la collezione *Kite*/Available only for *Kite* collection/Disponible seulement pour le modèle *Kite*

Composizione/Composition/Composition

Peso/Weight/Poids

Solidità alla luce/Light fastness/Résistance à la lumière

Resistenza allo sfregamento/Abrasion resistance/Résistance au frottement

Ignifugità/Fire retardancy/Réaction au feu

100% Poliestere/Polyester/Polyester

540 gr/m²

6 (UNI EN ISO 105 B02)

> 60.000 Martindale

Classe 1 (classe 1IM in combinazione con seduta con gomma ignifuga)/Fire retardancy/Traitement non feu

Manutenzione/Maintenance/Entretien

Aspirare regolarmente/Vacuum regularly/Aspirer régulièrement



TD SM1

Rete/Mesh/Résille

Disponibile solo per la collezione *S Mesh*/Available only for *S Mesh* collection/Disponible seulement pour le modèle *S Mesh*

Composizione/Composition/Composition

Peso/Weight/Poids

Solidità alla luce/Light fastness/Résistance à la lumière

Resistenza allo sfregamento/Abrasion resistance/Résistance au frottement

68% PL + 32% PEO

541 gr/m²

4 (UNI EN ISO 105 B02:2004)

> 70.000 Martindale

Manutenzione/Maintenance/Entretien

Usare acqua e sapone neutri, non usare prodotti chimici/

Use mild soap and warm water, do not use chemical products/

Utiliser savon neutre et eau tiède, ne pas utiliser produits chimiques



